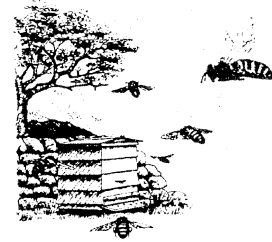


The Daily Worker

• Edition 19 March 2013

Web site: www.holsworthybeekeepers.org.uk



Roy Houghton



By now most of you will know that our branch member and former Convention Chairman Roy Houghton, died last Wednesday. Roy was my 'bee buddy' although I didn't know it. I just remember that I mentioned in passing that I was interested in keeping bees and the next thing I knew Roy and Ann had taken me to a club meeting and I was hooked. I went regularly to their apiary to watch and 'help' and Roy would patiently explain what he was doing - and why I should never do that!

Having a tiny garden and no storage space, I opted for a top bar hive and Roy was the one who arrived with bolt cutters, smoker and a positive attitude, to transfer my first nuc from standard frames to a funny shaped hive. I was terrified, he was masterly. With his gentle approach he taught me how to handle bees without spooking them. In fact his gentleness seemingly permeated his whole attitude and way of life. Everyone who ever knew him called him 'a lovely man' and he surely was.

He did sterling work as Chairman of the Spring Convention Committee and set the bar so high we were terrified we couldn't live up to his standards without him. Happily he managed to attend the last one for a couple of hours and expressed his satisfaction!

Roy's own apiary now has a new guardian to whom he taught beekeeping skills throughout 2012, David Gouedard, another Holsworthy Branch member

We are going to miss Roy enormously and our hearts go out to Ann and the family, who have lost a wonderful man far too soon. Roy's funeral will be at the East Devon Crematorium on Thursday 21st March at 12.15 and afterwards at Killerton House. Please let Ann know if you will be joining the family to say Goodbye to Roy.

Eunice Goodwin
Branch Secretary

SPRING CONVENTION 2013

The morning was opened by Graham Jones welcoming us all and introducing our first speaker Dr Norman Carreck Scientific Director University of Sussex.

The Hygienic Bee Behavior Project – Dr Norman Carreck

According to research, only 10% of British hives display hygienic bee behavior. Hygienic workers remove dead or infected larvae and pupae from their cells which reduces the spread of diseases within a colony.

Hygiene is a natural genetic trait. The study kept a known hygienic colony in an observation hive with freeze dried areas of brood. Observation was kept on these freeze dried areas and the hygienic workers removing the killed off brood were identified and marked. Daughter queens were reared that have the same father as the hygienic workers. In this way breeding for hygiene is more effective and rapid.

Dr Giles Budge is Research Co-ordinator at the National Bee Unit

Dr Giles Budge leads a team of top academics with Dr Ed Friel at the University of Bath, Professor Stephen Rushton at Newcastle

University and Professor Matt Keeling at the University of Warwick, in a project to investigate how diseases of pollinating insects move in the landscape.

Using data about where and when European foulbrood has been found as an example model and collating all the information from the other Universities the project aims to create the first model of its kind that can be applied at different scales (colony, apiary, region etc.) and to different bee diseases.

Ultimately, this project aims to develop a system that can make predictions about the epidemiology of a range of bee diseases, and lead to the development of effective means of controlling disease occurrence. In the shorter term it seeks to deliver improvements in how we inspect and monitor for EFB, and how we may decrease the impact of EFB and related diseases on our honeybee population.

Glyn Davies and Reg Godwin of DBKA surveyed Drone Laying Queens

During 2012 Glyn and Reg examined drone laying queens supplied by beekeepers in Devon and Cornwall. Glyn updated us on the findings and showed some remarkable photographs of the spermathecae and the possible area of malfunction preventing the sperm reaching the spermathecae. Using Reg's considerable skills in dissection, they were able to make slides of the sperm and using a Laboratory in Newton Abbot and ascertained that the sperm already carried all the viruses which were generally attributed to Varroa

Glyn concluded that this study was worthy of further investigation by someone other than two enthusiastic branch members.

Celia Davis

Is someone who has been keeping bees herself for many years, and her talk 'the Beekeeper versus the Bee' was full of practical advice. Her main theme was that we should be careful not to interfere too much with our bees. Her talk will have been helpful for most of the people attending the conference, particularly those who are relatively new to beekeeping

Dr Margaret Couvillon is a researcher at the University of Sussex

She gave a very interesting talk about the research project which she has been leading studying the dance language of the honey bee.

By decoding the waggle dance the team have been able to show how bees returning to the hive after foraging pass on to the rest of the bees information about the direction and distance from the hive for sources of pollen and nectar.

Our last speaker was **Emily Simcock**, who is working at The Bee Vet in Exeter. This is a veterinary practice offering a range of services to meet the needs of beekeepers and their bees. Emily talked about the trial work they are undertaking to study the use of predatory mites to control varroa.

So far this is looking very encouraging but needs further time and more extensive trials before they can be confident that it is a realistic choice for most beekeepers.



Summary

Many thanks are due to the **Conference Committee** and all those who were involved in making the day such a success once again. Congratulations to **Linda Davis** for bringing together such an excellent range of speakers, to **Graham Jones** for controlling the day and keeping everything moving to time.

To those who were involved in the **catering** and provided such an excellent lunch, enjoyed by all.

Once again **Geoff Heal** did a sterling job with the raffle.

It was so good that **Roy Houghton** was able to be involved with the day.

Also to all those who were involved in helping to set up the hall, marshalling in the car park, transporting delegates from the chapel car park,

and those who were checking people in at the door.

The success of the day is dependant on a whole team of people and our club is fortunate to have their input.

Dunsland Apiary

The dates of the Apiary Meetings are

APRIL: 14th and 28th 2:30 Apiary meetings at NT Dunsland House

JULY 7th Apiary Party – Grand Opening of the club house at NT Dunsland House and 50th Golden Anniversary of the DBKA Holsworthy Club. All Welcome - Past members and new.

Further Apiary Meetings at Dunsland

MAY 26th: 2.30

JUNE 9th and 23rd:2.30

JULY 7th and 21st :2.30

AUGUST 4th 2.30

Work on Dunsland Apiary Club House

On 1st March the whole committee turned up at the Coach House to start the second phase of the renovations.

By lunch time the first coat of floor paint was down and left to dry whilst a ruthless dumping of junk took place. Brian and Eunice

completed the second coat over the next couple of days.



Finished the first coat



Sorting junk