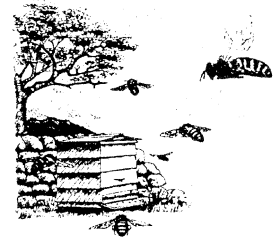


The Daily Worker

• Edition 17 September 12

Web site: www.holsworthybeekeepers.org.uk



Holsworthy Show

This year's show was blessed with weather which, if not the best, was certainly much better than in recent year and visitors did not have to endure the usual seas of mud.

The Branch's stand in the Food and Drink marquee proved to be an immense success. Our exhibit consisted of our award winning Devon County Show entry based upon the theme of 'Life in the Frame', our virtual hive, and the ever popular candle rolling. We also had the opportunity to sell honey on behalf of the branch and members.

Such was the overall attractiveness of the stand that we were awarded the accolade of 'Best Stand' in the Food, Drink and Craft section and a Special Rosette.

There is no doubt that the announcement by the National Bee Unit, carried by the BBC on the day of show, that the honey harvest nationally is likely to be over 60% down on previous years and reference to the atrocious conditions endured by the bees (and beekeepers!) this year, led to an even greater interest our stand. There were certainly a number of membership enquiries and offers of apiary space.

As always, these events cannot take place without the support of our members. And so, a big thank you to those who volunteered to help put up and dismantle the stand, and to those who undertook stewarding duties on the day. I am sure we all enjoyed the experience as much as the public did.
Christopher Smith



Annual Honey Show 13th October 2012.

We're back! Our annual Honey Show is returning to the public arena. The event will again be held in the Methodist Church Hall in Bodmin Street, Holsworthy, a venue which offers us ample room and a warm welcoming atmosphere.

The show is open to the public between 10am and 2pm, we have invited the Mayor of Holsworthy to formally open this event and a surprise celebrity to present the prizes and trophies.

Why not make the 2012 Honey Show special by entering, maybe for the first time, any of the seventeen classes, including a new wax class. Our annual Honey Show really is an opportunity for us to show off our craft to the general public and indeed to each other. Full details, including the schedule and rules, can be found on our Branch website www.holsworthybeekeepers.org.uk

If you do not have access to the Internet, our Honey Show Secretary, Graham Jones will be delighted to send you a copy. Give him a ring on tel. 01288 361147.

In addition to the traditional honey show classes, we have once again invited local primary schools to participate in the two, children only, art classes. There will also be a chance to buy and sell honey, to roll a candle and, if you have yet to see it, to have a look at our winning Stevenson Trophy exhibit, 'Life in the Frame', from Devon County Show.

And of course you can relax over a taste of honey whilst enjoying a cup of tea or coffee. It would be great to offer a range of honey for our visitors to taste, so if you can spare a jar, please let me know. But we do need help to make this event special. Can you spare time to help for a few hours on the day or help set up on the night before (Friday 12th)?

If you can help in any way, please contact me, Christopher Smith, on tel. 01409 254457.

Nosema Testing Day

Our Nosema testing day was held on Saturday 1st September in The Stables, Chilsworthy.

Overall the results were:

Total samples tested:			74
Level of Nosema	Nil	44	59%
	Light	22	30%
	Medium	6	8%
	Heavy	2	3%

Thanks are due to all those members who helped on the day.



Brian Dixon writes on Varroa

This relates to my experience with varroa this year.

I had kept one hive inside a greenhouse for the winter and the greenhouse was warmed to 70 deg f each day.

When I checked the hive in March I noticed a heavy varroa drop. I cleaned the board and there was an overnight drop of about 200.

I had treated it with Apiguard and oxalic acid last September the same as the other hives.

I tried "Beevital hive clean " from Modern Beekeeping, treating the hive each Monday for four weeks and the drop reduced to zero.

I just checked it today and found 3 varroa.

I did notice after starting the treatment that many of the varroa on the board were alive. This might indicate that they were displaced by grooming rather than falling off dead.

The attached picture shows a small portion of the board covered with varroa. This was just one nights drop.

Brian



Coming Events

Mon 10 September 2012 7.30pm

'The beekeeping summer of 2012'

The first speakers in our 2012-13 series of monthly indoor meetings are Adam Vevers, the Regional Bee Inspector and David Packham, a Seasonal Bee Inspector.

They will be summing up the 2012 beekeeping season - the good, the bad and the ugly.

Adam is hoping to bring along some diseased frames to illustrate the need for our vigilance against AFB, EFB and other brood diseases. So come along for an informative and entertaining evening!

All are welcome. Members £1, guests £2. Tea and biscuits provided.

'The Stables', Chilsworthy Methodist Church,

Monday 8th October 7.30pm

Local Butterflies

Speaker Hilary Marshall a local biologist working in nature conservation.

All are welcome. Members £1, guests £2. Tea and biscuits provided.

'The Stables', Chilsworthy Methodist Church,

Spring Convention 2013

Saturday 23rd February 2013

Chilsworthy Village Hall

Speakers

Dr. Norman Carreck – the Hygienic Bee Behavior Project

Dr Giles Budge – National Bee Unit

Celia Davis – renowned author and lecturer on bees and bee-keeping

Dr. Margaret Couvillon – the waggle dance and foraging behavior

Glyn Davies and Reg Godwin – Drone laying queens

DARG Seminar

23rd September from 9.30am

Kenton Village Hall, near Exeter.

The Synergy between Pollen & Plants- why should we be concerned?

Speakers include;

Dr Madeline Harley

Dr Michael Keith Lucas

For further details ring Roger Lacey 01404 811773



Thought for the month;

'We can't all be heroes because somebody has to sit on the curb and clap as they go by'

Will Rogers