

The Daily Worker

• Edition 16 June 12

Web site: www.holsworthybeekeepers.org.uk

Holsworthy Beekeepers enjoy the sweet taste of success at Devon County Show

What a year for our members! Both as individuals and as a branch of Devon Beekeepers Association, we excelled at the recent Devon County Show.

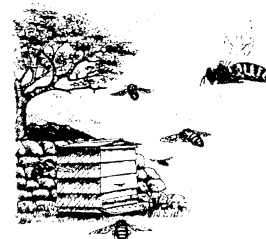
Master minded and coordinated by Andrew Sluggett, our Chairman, the Branch's stand at the Show was based on the theme of 'Life in the Frame' providing a somewhat light hearted glimpse of the bees' lives inside a hive. Children were certainly impressed by the model queen bee, wearing a crown for Jubilee Year. All the effort was worth it and the display certainly impressed the judges; Holsworthy were awarded the Stevenson Trophy, for the best Branch display, for the third time in five years!

Many thanks must also go to those members who gave up their time and made the long trip to County Showground in order to steward the Branch stand.

In a honey show of very high standards, Christopher Smith won the Barnstable Bowl for the highest overall marks in the Devon honey classes. Other Branch members achieving success were Andrew Sluggett, Reg and Sue Godwin, and Ruth Neal. Such were their collective achievements, they gained the most points of any of the eleven branches of Devon Beekeepers Association and were awarded the Divisional Cup for the second successive year. In addition to finding time to enter the show, Ruth Neal also chairs the DBKA group that plans the whole 'Bees and Honey' feature of Devon County Show. Now something of an institution at the Show, the section won a gold medal for the third time in three years!

Despite all the success, it must be said that those achievements were made by no more than five members who exhibited, four members who constructed the Stevenson Trophy display, and a further eight who gave up their time to steward at the Show.

But nevertheless, what a year for the Branch!



Show photos (more are on the branch [website](#))



The Holsworthy winning entry for the 2012 Stevenson Trophy



Holsworthy Branch members with the trophy



Queen Rearing Course

Unfortunately the course session on the 3rd June had to be cancelled due to the weather. This will be rescheduled and course members will be notified of the date. The other course sessions will be on the 1st and 29th July. (These are for course members only). Most of the course members have now got bees and are finding out the trials and tribulations of bee keeping. Please can everyone continue to offer the help and support that you have been providing and which makes membership of this branch so worthwhile.

Show Stewarding

Two course members took on the role of stewards to man the branch exhibit at Devon County Show. Despite being new members and new to bee keeping. Their comments below show that they found the experience both positive and worthwhile.

“When I volunteered I was not sure what I was letting myself in for but when I got there it turned out to be a

brilliant day out. I met loads of people I would not have otherwise met. I also had a chance to look around and see what other people were doing. I will consider doing a stint again next time. It was a good thing to do and would recommend it to others to have a go."

Raymond Hooper

"I thoroughly enjoyed my few hours helping on the Holsworthy stand at the Devon County Show. As a beginner I was worried that I would stumble at the first tricky question and be instantly humiliated as a novice know-nothing. In fact the superb stand with its gigantic replica bees ('awesome' was one boy's reaction) and excellent explanatory comments answered most questions in an easy and fun way. I just enjoyed chatting to an endless stream of interested and enthusiastic members of the public. The overwhelmingly positive response from people was very encouraging. I met lots of other Devon bee keepers and even had time to dash around the rest of the show. A great morning."

Willa Bailey.

Thank you to the two of you who were brave enough to volunteer.

Anne Binns



DBKA Celebrity Lecture

Now an annual event, this year's DBKA Celebrity Lecture took place for the first time at Hannahs@Seale Hayne. Over eighty beekeepers from Devon and beyond gathered on Tuesday 24th April to hear Dr Deborah Delany deliver a fascinating lecture on honey bee biology.

Dr Delaney is a research scientist working at the University of Delaware, USA and gave an insight into what she described as the absolutely amazing morphology and physiology of the bee. Time and time again, I found myself saying 'well, I didn't know that'.

We are very fortunate that, as a highly regarded organisation in the beekeeping world, the DBKA is able to attract this calibre of speaker. It is therefore somewhat disappointing that our Branch was represented by only two members. 'It's a long way to go' I hear you say, and it is. But not as far as Dr Delaney had come to meet us!



Brian Dixon writes

I split a hive that was preparing to swarm in early May. I found the (marked) queen and placed her in a new brood box with a couple of frames of brood and two frames of food with the remainder of the brood box filled with foundation or drawn comb. This was moved to a new location about 25 metres away, a roof fitted and the remainder of the brood and

food frames were left on the original location with spaces filled with foundation.

I checked the hive on the original location a week later to see the progress of queen cells and was surprised to find the marked queen back on the original location and queen cells torn down. I found some nearly complete queen cells in another hive so I moved the frame with the queen cells on it to the new location of the split.

Now I am waiting to get back from my holiday to check progress.

Has anyone else had a similar experience?

Brian Dixon.



FOR SALE –

I will be downsizing my apiary during the next month or two.

I will have full colonies on National frames for sale at £100 each including delivery and setting up in your hive. Locally bred productive bees, always overwinter well.

Please contact Reg Godwin 01288-381379 or

reg@freeola.com



You Tube Clip

I thought club members might be interested in a short video clip I made of a swarm (not my bees!) entering a bait hive.

I had an old Langstroth hive which I converted into a bait box last year. I tried it with lemongrass oil sprinkled inside but never picked up a swarm all year. This year I set it aside and put some redundant frames in waiting to be rendered down. Within a week a swarm of what look like Italian-cross bees descended on it (mine are mostly black bees). I had noticed about a dozen scout bees investigating the box the previous day.

It was a complete fluke that while I was filming the bees pouring into the entrance, I managed to spot the unmarked queen wandering in (check at 1min22 at the right hand side of the landing board and she enters the hive at 1min26).

It's not often you catch them swarming into a hive, they are usually going in the opposite direction! Apologies for the definition which really degrades when uploaded to YouTube.

But you can change the resolution to HD if you click on the daisy flower symbol on the tool bar below the YouTube screen. The link is

http://www.youtube.com/watch?v=LP76fWWfmlQ&feature=youtube_gdata

Reg Godwin