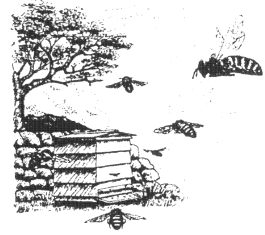




The Daily Worker

• Edition 9 February 2011

Web site: www.holsworthybeekeepers.org.uk



From the Chairman

Since the AGM in November we have been functioning without an elected Branch Treasurer. Despite several pleas for help, no-one has stepped forward. However, we cannot function without one so Reg Godwin, our Branch Secretary, has been holding the fort and doing both jobs; brilliantly, I might add!! He has now very generously agreed to continue doing both roles until the next AGM. But that will be it - Reg cannot function indefinitely at this rate and nor should he have to. Also, as the weather improves Chris Smith will be calling for volunteers to make up work parties at the Dunsland House Apiary. Please help where you can. Any type of help will be warmly appreciated, whether it is skilled or not (I think free tea and biscuits will be the bribe!). I really hope you will be able to support the Valentine's Day Branch evening for a talk on "Sex and Bees"; the Spring Convention; and our March function. More about these events later in the Newsletter. I look forward to seeing you at all or any of them.

Regards, Ruth Neal



Spring Convention 2011

Saturday 26th Feb 2011

Chilsworthy Village Hall, Nr. Holsworthy.

PROGRAMME

9:15 Assembly with tea and coffee

9:45 Welcome

9:55 Adam Vevers – Licensed and Unlicensed Treatments of Varroa

10:45 Ron Hoskins – The Hygienic Swindon Honey Bee

11:50 Michael Keith-Lucas – Uses of Pollen in Crime Detection

13:00 Lunch

14:00 Mathilde Briens – Sniffer Bees

15:00 Jo Widdicombe – The Cornish Black Bee Project

15:45 Close

Picture Quiz and Raffle will be held during the day.

Trade Stands:

Bitz4Bees – items can be pre-ordered and collected on the day. Contact Derek Hunter – 01769-561033

Modern Beekeeping – A wide range of beekeeping clothing and equipment

website: <http://www.modernbeekeeping.co.uk>

ThisBee Art – original bee related artwork (profits to branch funds)

West Lake Orchards – apple related products (percentage to branch funds)

website: <http://www.west-lake.co.uk>

Holsworthy Branch honey – profits to branch funds.

Registration Cost: £12 including Ploughman's Lunch tea/coffee (£10 for Holsworthy Branch Members)

Book Now. There are still some places available at the time of going to print.



Appeal for Cakes & Draw Prizes

It seems we always ask a lot of our members, but as in previous years, we are asking for donations of cakes to compliment the Ploughman's Lunch at the Spring Convention.

There is no doubt that those who attend view the Convention's catering as a highlight of the day.

So can we do it again in 2011?

Any cake, but ideally a tray bake (it's easier for the 'Catering Team'!) would be most welcome.

If you can help, please contact Ann Houghton on tel. 01409 250230 or email

annahoughton42@btinternet.com

We are also seeking items to add to our prize draw. Provisions to add to a hamper would be most welcome.



Dates for Your Diary

Monday 14th Feb. The Stables, Chilsworthy Chapel.

Monthly indoor meeting 7.30pm

'Sex & bees'

Glyn Davies, the editor of the DBKA magazine, 'Beekeeping' will be giving an illustrated talk on well how shall we put it? Yes its sex and bees! Knowing Glyn it will be both entertaining and informative.

So come along and be prepared for some excitement! Illustrations will be available!



Friday 11 March 2011, 7.00 for 7.30pm

Annual Dinner & Social Evening

Rydon Inn, Holsworthy. £18.45 for three courses.

For the menu see the branch website. To book please email Linda Davis at info@west-lake.co.uk or phone 01409 221991 by 4 March at latest.



Nosema Day

Saturday 2nd April 2011

The branch is providing another Nosema diagnosis day on Saturday 2nd April 2011 at our usual meeting location, 'The Stables', Chilsworthy Methodist Church. Samples should be delivered between 10.00 and 12:00 noon, either in person or by another member. The first 6 samples are free, after that the charge is £1 for each sample. Instructions on how to collect the sample of 30 bees can be downloaded from the branch website www.holsworthybeekeepers.org.uk. If you don't have a computer, contact me and I will post the instructions to you.

This is a not-to-be missed service run by a regular team from the branch. The importance of knowing whether your bees have Nosema cannot be over-emphasised. There's no point treating them for Varroa only to lose them with Nosema and there's no point in treating them for Nosema if they haven't got it. If you are interested in

how the branch microscopists test the samples, feel free to come along, watch the process and look down the microscope. Volunteers are always needed for counting the bees and preparing the samples for the microscopists. As a bonus, anyone who helps on the day will have any samples in excess of six tested free of charge. The jobs are very easy and the atmosphere very enjoyable.

Last Autumn we tested 110 samples and had a lot of positive results but that must be a fraction of the number of hives run by our members. Don't just cross your fingers, find out if your bees have disease the scientific way.

Reg Godwin



The Branch Treasurer position

Since the end of November 2010, following the unexpected resignation of the previous treasurer, I have been acting as interim treasurer. I'm sure everyone will appreciate the importance of managing the branch funds which can not be allowed to fall by the wayside. In the absence of any volunteer to take on this role, the branch committee has authorised me to continue as treasurer as well as performing my duties as secretary. Due to my own workload and family commitments, I would not be able to continue to do both jobs beyond the next AGM in November nor would it be desirable for the club to have one person in both roles. I hope that someone with a reasonable head for figures will put themselves forward at the AGM to take on this role. The benefits of the club come from the combined contributions of the members and to paraphrase Winston Churchill, it would not be fair to have so few people doing so much for so many. Please step up to the plate when the time arises.

Reg Godwin

Biography - Ruth Neal, our Chairman.

Life can be defined as Before Bees and After Bees. BB - a Home Economics teacher, married to an RAF officer and pilot, and moving house every two years. We have two daughters and have twice lived in the USA. AB - we retired to North Devon and I initially

joined the DBKA North Devon Branch and studied with Kay Thomas. A beekeeper for six years, I have loved every minute of it. At present I am Chairman of the Branch, and Chairman of the DBKA Show Committee for the Devon County Show. I have provided two "All About Bees" days at the Eden Project; and stewarded at the National Honey Show and lectured at the Royal Cornwall Show, both by invitation and both for three years running.

I am also the Mid-Torridge Organiser for the RBL Poppy Appeal. I enjoy reading, driving, many handcrafts and cooking, and dabble in pantomime. My latest accomplishment is as a 'commentator' on several elderly aircraft at the Elvington Wings & Wheels Show in York. I wonder what is just around the corner!!

Ruth



Query from a new Beekeeping member

I attach a picture of one of my hives on a sunny day in August. They were very noisy and there were hundreds buzzing around the entrance up to about 15 feet. You could hear the noise about 25yards away. This is my first year, is this normal?

Brian Dixon



Dunsland House – A new teaching apiary

Following two very successful working parties, it is perhaps an opportune moment to consider just how we are going to turn the site at Dunsland into an apiary. Let there be no doubt, this is a large project, but at the end of it we should have a teaching apiary to be proud of, with some first class facilities.

At a recent meeting of the Branch Management Committee, three key stages in the work were identified:

Following the completion of fencing work by the National Trust, we aim to progressively move bees and colonies from the previous Branch apiary at Hollacombe to Dunsland during this coming spring. This will allow us to use the site for the practical element of this year's Beginners' Course.

The second stage, which we aim to complete during the remainder of 2011, will involve the creation of a workshop and storage facilities in part of the coach house.

And the final stage will be to create a meeting room in the remainder of the stables. Our target for completing this is 2012.

This is only a brief outline of the work. Further details can be obtained from our Project Manager, Christopher Smith, via the Branch website or tel 01409 254457.

Chris would also like to hear from anyone who has particular skills, for example carpentry or electrical. The 2nd Dunsland House Working Party
Christopher Smith



Report on second Dunsland Apiary working party.

On 29th January over a dozen intrepid Branch members once again braved the cold to help prepare for our new apiary at Dunsland House. Fortunately the access roads were not covered in ice as they were on our last visit and we were able to park adjacent to the coach house.

The workers split into teams, some moving rocks, others clearing the drive up to the apiary paddock of accumulated mulch. It looked like it was going to be a long job moving a floor full of rocks from the stables which the club is going to use for its meeting room and workshop/store into the adjacent carriage house retained by the National Trust but as the old Chinese electricians proverb goes, "many hands make light work" and it certainly worked for us.

It was a great discovery on our first working party that beneath the deep squelch of mud on the paddock

approach, someone had previously laid hardcore. Once the top layer was scraped off, there was a solid surface beneath which will only need a light topping of stone chippings to make it as good as new. We have started doing the same thing with the pedestrian approach to the front of the coach house.

Christopher Smith (Project Manager) and Andrew Sluggett (Apiary Manager) surveyed the paddock and planned where the first hives will be established. These will be the teaching hives for the beginners. Lots of new equipment will be needed and we have to be especially careful in complying with the requirements of the SSSI site which means no tanalised timber for our hive stands. Fortunately we have sourced a supplier of hardwood stands and they should last for many years to come.

All in all it was another successful session and keeps us on track to get the apiary, if not the meeting room and workshop, set up by April. Many thanks to all those who gave up their Saturday afternoon to help.

Reg Godwin
Branch Secretary



Thoughts for the Month

Two Chinese proverbs;

1. Spring is sooner recognized by plants than by men.
2. If we do not change our direction, we are likely to end up where we are headed.



Holsworthy Bee Club **Committee Members**

Chair

Ruth Neal 01805-601715
RuthMNeal@aol.com

Vice Chair

Ian Frazer 01409-261216
jillwiltshire42@fsmail.net

Secretary & Treasurer

Reg Godwin 01288-381379
reg@ freeola.com

Membership Sec./Webmaster/ Swarm Liaison

Graham Jones 01288-361147
jones@maves.co.uk

Education Officer

Anne Binns 01409-261381
j.binns990@btinternet.com

Apiary Manager

Andrew Sluggett 01409-241563
andykimsluggett@btinternet.com

Entertainments/Events

Linda Davis 01409-221991
info@west-lake.co.uk

Branch Calendar

John Duncan
jdbude@mac.com

Research

Brian Dixon 01288-359468
bdixon4349@tiscali.co.uk

Magazine Distribution

Jill White 01409-221618



Editors Note

The next Daily Worker will be for early April so items please to David Arney by late March.

dja@davidarney.plus.com