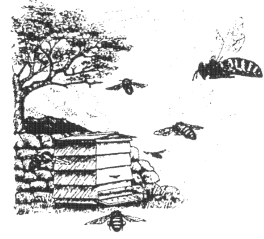




The Daily Worker

• Edition 4 October 2009



Holsworthy Show

2009 marked the second year of our return to the Holsworthy & Stratton Agricultural show. A key attraction on our stand was the Devon County Show entry, 'The Honey Monster', which generated a lot of interest, particularly as it was the subject of our family quiz.

The small band of volunteer stewards was kept busy providing an information point, focused on the Branch virtual hive, on beekeeping and Branch membership. Not only were there enquiries about become a beekeeper, but also offering apiary sites (see elsewhere in this newsletter).

Of particular note was the sale of Branch honey from our own apiary. This is thought to be the first time in several years that Branch honey has been prepared for and sold directly to the public, this complemented the sale of other members' honey to a number of enthusiastic customers

As always, candle rolling was a major attraction for the young and sometimes not so young. In fact, it was so successful that every last piece of wax foundation was used.



Annual Honey Show 24th October 2009

I am calling upon all members to support this year's honey show. If you are a new member and do not yet keep bees the cookery classes could be for you. This year's show will be open to the public and in a much better, bigger venue. (Methodist Church Hall Bodmin Street, Holsworthy).

Show schedules have been sent with last month's Beekeeping magazine. If you do not plan to enter, you could still come along and help with the various activities – honey show classes, children's artwork, candle rolling, photographic display and a taste of honey - that will be taking place.

We really do need your help to make this event special, so even if you can only help for a few hours on the day, please ring me on 01409 261381
Anne Binns – Honey Show Secretary



Taste of Honey

As part of our annual Honey Show (see article in this newsletter), we aim to offer the public a taste of honey. To do this, we need both honey and scones. If you can make some scones or donate a jar of honey, then both would be most welcome. Please contact Elaine Smith on tel. 01409 254457 if you are able to help.



AGM

This year's AGM takes place on Monday, 9th November at 7.30pm, in The Stable, Chilsworthy Methodist Chapel. This is your chance to come along and have a voice in the running of your Branch. And perhaps even consider joining the Branch Committee. We have vacancies for a treasurer, membership secretary, and DBKA Executive Council delegate, but would welcome new members of the committee in any capacity.

After the success of last year's AGM, we would again invite members to bring and share food for our supper. Additionally, for the first time, we will be holding an auction of beekeeping equipment. This is an opportunity for you to turn your unwanted equipment into cash, and benefit other beekeepers.



Apiary Sites

Over the course of the summer, Holsworthy Branch has done its best to raise the public's awareness of beekeeping. We have had a presence at most local shows, and a number of members have given talks to various community groups.

One consequence has been several offers of sites for apiaries, ranging from space for two to several hives. These sites cover most of our catchment area. If you are interested in a site for an out apiary, please contact Christopher Smith on tel 01409 254457



Nosema Disease Diagnosis Day

On Saturday 12th September the branch held a microscopy day to analyse samples for Nosema. All members both new and old that attended learnt the process of slide preparation and diagnosis of spores under a microscope. Approximately 70 samples were examined. The results:- 74% were clear of infection and 26% were found to have a light or medium infection.

Sadly the take up rate from members for this service was poor but it was still a worthwhile exercise for the members who had bees examined and those who learnt new skills by participating on the day.

All infected colonies need to be treated at this time of year otherwise they are unlikely to survive beyond spring. Colonies that do survive into spring are often very slow to pick up and this can result in a poor honey crop.

Fumigillin (Fumidil B) can be administered in sugar syrup in both spring and Autumn when it is not going to contaminate stores. It may not kill all spores so colonies should be examined for Nosema in both spring and autumn.

A new product, Vitafeed gold is now on the market and though not specifically licensed for the treatment of Nosema (it is sold as a feed supplement) we have been informed by Bee Inspectors that it is very effective.

We hope to run a further Nosema diagnosis day in spring when we hope to have more members taking the opportunity to get their colonies checked.



Bee Space

Jeremy and Rosemary Jessel of East Putford are bee friendly folk but don't have time to keep bees themselves. They would like to offer space to someone to keep bees on. They have a young orchard and pasture of special scientific interest.

Replies to Anne Bentham 01409 261152 or pingle.bentham@virgin.net



Importing Queens

There is a body of opinion that all imports should be banned. However, there is an equal body of opinion in favour of the imports being allowed to continue.

Join us on 12th October for a lively debate on the issues - led by Bee Inspector Adam Vevers. Please read from the BBKA magazine April 09 which says.... "Importing theoretically offers opportunities to benefit from improved strains deemed superior to what is available locally. Claims such as 'more docile bees, less prone to swarming, better foragers and greater disease resistances...."

However beekeepers need to ask - are the claims valid, what is the evidence, can the same benefits be obtained from particular strains of bees already here, what are the risks of accompanying diseases?

Note: Varroa was not discovered in Ireland until 1998 - 6 years after it was first seen in GB. Small Hive Beetle is not yet in Europe or GB although widespread in USA but a native of Africa. The threats from importing bees are real. Please read up on the issues and join in the debate. See you there.

Linda Davis - Entertainments Secretary



Dates For Your Diary

Mon. 12th Oct. 7.30pm. Monthly meeting at The Stables, Chilsworthy Methodist Church.

Importing Queens by Adam Vevers. See above article.

Saturday 24th Oct. Branch Honey Show. Holsworthy Methodist Church. See above for details.

Mon. 9th Nov. Branch AGM. Details above.

Mon. 14th Dec. Christmas social event - West Lake Farm

Apple pressing and cider making. George Davis will show us how to turn our surplus apples into a year round harvest (complete with tastings). There will also be mulled cider, mince pies and Xmas cheer. £2 each to branch funds. Opportunity to buy apple products (20% to branch funds).

Bring along a guest.



Quotation

Bees work for man, and yet they never bruise
Their Master's flower, but leave it having done,
As fair as ever and as fit to use;
So both the flower doth stay and honey run.

- [George Herbert](#), *The Church--Providence*