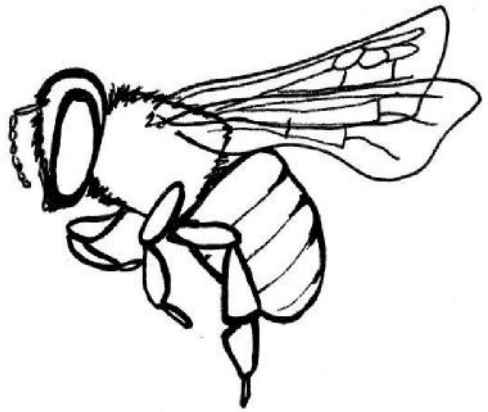


# Why not learn how to keep bees?



Join the beginners course at Holsworthy Beekeepers

Discover:

- What goes on inside a honey bee colony
- How the three castes of bees work together
- What equipment you'll need to set up your own apiary
- Where to get your first colony
- How to make sure they have enough food
- What diseases to look out for
- What to do when they swarm
- How to harvest the honey from your bees

The course:

- Has 10 weeks of theory followed by practical sessions
- Runs on Wednesday evenings, starting 27 February 2019 at 7.00 pm
- Has tutors who are experienced beekeepers
- Costs £110, including membership

Contact Deirdre: [treasurer@holsworthybeekeepers.org.uk](mailto:treasurer@holsworthybeekeepers.org.uk)  
or by telephone 01237 440165

No experience necessary - just an interest in keeping honey bees